



English

# Catalogue

Electric propulsion systems for leisure,  
commercial and subsea applications.



**FORGET**  
EXHAUST GASSES,  
VIBRATIONS AND NOISE



# // TABLE OF CONTENTS

## **Introduction**

About the Company	01
Competitive Advantages	02

## **Thrusters**

Standard bow or stern thruster	13
Bow thruster tunnel set	14
Bow thruster box	15

## **Configurations**

Propulsion	03
Thrusters	04

## **Accessories**

Batteries	18
Chargers	21
Throttle controls	22
Smart solutions	23
Displays	24

## **Propulsion systems**

POD	05
Steerable PODs	07
Outboards	11

# // INTRODUCTION: ABOUT THE COMPANY

This is Rim Drive Technology. 100% electric Rim Drive motors, ranging from 0.5 kW to 75.0kW. Rim Drive Technology develops, manufactures, and sells Rim Drive motors for the private, commercial, industrial, and underwater applications.

Our motors can be used as either main propulsion or secondary drives.

Our mission is to convince customers. Convince them that our motors work for many hours with a service intervals and the highest user experience. If we succeed with this mission, we will advance on our vision of a better eco-friendly future.

## Sustainable impact

Our motors are part of countless projects and applications around the world.

## Quality control

Our production, R&D, and office are based in the **Netherlands** to ensure product quality.

## Expertise

Rim Drive Technology has a team of designers, engineers, strategists, and over 40 partners.

## Looking for an Rim Drive Technology partner?

Scan the QR code to explore available partners in your area.



## Want to become a partner?

Scan the QR code to fill in the application form.





## // INTRODUCTION: COMPETITIVE ADVANTAGES

For boat builders, we provide an easy-to-assemble package that consists of a plug-and-play system that is easy to integrate into any boat. And for the end user it is a product that consists of few compartments making it easy to repair.



### **Acceleration response**

An immediate acceleration response in comparison with conventional solutions.

### **No central shaft**

No center shaft limits the chance that ropes, or fishing nets will get stuck in the propeller.

### **Limited maintenance**

Only one rotating part which reduce the amount of maintenance.

### **Compact and lightweight**

A compact and lightweight design makes our products compatible for the smallest installation.

### **Stepless controlling**

Because of the stepless controlling our rim drive motors can be operated proportionally.

# // CONFIGURATIONS: PROPULSION

POD



---

Power range:  
0.5kW - 75kW

Steerable PODs



---

Power range:  
2.5kW - 75kW

Outboards



---

Power range:  
2.5kW - 75kW | 11kW - 15kW



# // CONFIGURATIONS: THRUSTERS

Bow thruster



---

Power range:  
0.5kW - 75kW

Stern thruster



---

Power range:  
0.5kW - 75kW

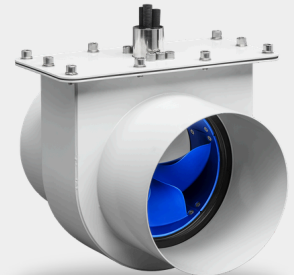
Thruster tunnel set



---

Power range:  
2.5kW - 75kW

Thruster box



---

Power range:  
2.5kW - 75kW

# // POD

The better alternative for an inboard motor

## Characteristics



Electric propulsion



Salt water resistant



Low in maintenance



One day installation



## Specifications

	POD 0.5	POD 2.5	POD 3.0	POD 4.2	POD 5.0	POD 8.0
Power (kW)*	0.5	2.5	3.0	4.2	5.0	8.0
Nominal voltage	48V	24V	48V	24V	48V	48V
Weight (kg)	2.5	3.5	3.5	5	5	10
Static thrust (kgf)	7	24	31	50	62	120
Motor controller included	Yes	Yes	Yes	Yes	Yes	Yes

POD 11.0	POD 15.0	POD 22.0	POD 25.0	POD 30.0	POD 50.0	POD 75.0
11.0	15.0	22.0	25.0	30.0	50.0	75.0
48V	48V	48/96V	96V	110V	400-800V	400-800V
14	22	50	70	70	73	100
156	195	300	380	400	720	850
Yes	Yes	Yes	Yes	Yes	No	No

\*Motor power is depending on water conditions, usage and installation.



# // ENTRY LEVEL - STEERABLE POD

Maneuverability combined with unique rim drive motors  
 You replace the rudder and sealing, install the motor through it and then secure the rudder arm. It can be connected to the current steering system.

## Characteristics



Electric propulsion



Salt water resistant



Low in maintenance



One day installation



## Specifications

	EL Steerable POD 2.5	EL Steerable POD 3.0	EL Steerable POD 4.2	EL Steerable POD 5.0	EL Steerable POD 8.0	EL Steerable POD 11.0
Power (kW)*	2.5	3.0	4.2	5.0	8.0	11.0
Nominal voltage	24V	48V	24V	48V	48V	48V
Weight (kg)	14.5	14.5	17	17	23	26
Static thrust (kgf)	24	31	50	62	120	156
Motor controller included	Yes	Yes	Yes	Yes	Yes	Yes

EL Steerable POD 15.0	EL Steerable POD 22.0	EL Steerable POD 25.0	EL Steerable POD 30.0	EL Steerable POD 50.0	EL Steerable POD 75.0
15.0	22.0	25.0	30.0	50.0	75.0
48V	48V/96V	96V	110V	400-800V	400 - 800V
35	70	101.1	101.1	106.1	132.7
195	300	380	400	720	850
Yes	Yes	Yes	Yes	No	No

\*Motor power is depending on water conditions, usage and installation.



# // STEERABLE POD

Zero turn steering for ultimate maneuverability

The steerable POD offers unparalleled maneuverability and control, making navigating tight spaces and challenging water conditions effortless.

## Characteristics



Electric propulsion



Salt water resistant



Joystick, steering wheel or CAN



One day installation



## Specifications

	Steerable POD 2.5	Steerable POD 3.0	Steerable POD 4.2	Steerable POD 5.0	Steerable POD 8.0	Steerable POD 11.0
Power (kW)*	2.5	3.0	4.2	5.0	8.0	11.0
Nominal voltage	24V	48V	24V	48V	48V	48V
Weight (kg)	21.5	21.5	23	23	28	32
Static thrust (kgf)	24	31	50	62	120	156
Motor controller included	Yes	Yes	Yes	Yes	Yes	Yes

Steerable POD 15.0	Steerable POD 22.0	Steerable POD 25.0	Steerable POD 30.0	Steerable POD 50.0	Steerable POD 75.0
15.0	22.0	25.0	30.0	50.0	75.0
48V	48/96V	96V	110V	400 - 800V	400 - 800V
37	75	110	110	113	135
195	300	380	400	720	850
Yes	Yes	Yes	Yes	No	No

\*Motor power is depending on water conditions, usage and installation.





# // ENTRY LEVEL - OUTBOARD

The perfect solution for operators who are looking for an affordable system



This new tiller version adds a strong tiller and a clear display that shows essential motor information and, if desired, battery status. This tiller option is available up to **15kW**.

## Characteristics



Electric propulsion



Integrated trim  
Optional: electric trim



Low in maintenance



Integrated tilt  
Optional: electric tilt



## Specifications

	EL Outboard 2.5	EL Outboard 3.0	EL Outboard 4.2	EL Outboard 5.0	EL Outboard 8.0	EL Outboard 11.0
Power (kW)*	2.5	3.0	4.2	5.0	8.0	11.0
Nominal voltage	24V	48V	24V	48V	48V	48V
Weight (kg)	20	20	23	23	28	31
Static thrust (kgf)	24	31	50	62	120	156
Motor controller included	Yes	Yes	Yes	Yes	Yes	Yes

EL Outboard 15.0	EL Outboard 22.0	EL Outboard 25.0	EL Outboard 30.0	EL Outboard 50.0	EL Outboard 75.0
15.0	22.0	25.0	30.0	50.0	75.0
48V	48/96V	96V	110V	400 - 800V	400 - 800V
39	85	105	105	108	135
195	300	380	400	720	850
Yes	Yes	Yes	Yes	No	No

\*Motor power is depending on water conditions, usage and installation.



# // STEERABLE OUTBOARD

Zero turn steering as an outboard solution

Our Steerable Outboard boasts an impressive 320-degree rotation and 360-degree propulsion.

## Characteristics



Electric propulsion



Fixed trim  
Optional: electric trim



Low in maintenance



Optional electric tilt



## Specifications

	Steerable Outboard 11.0	Steerable Outboard 15.0
Power (kW)*	11.0	15.0
Nominal voltage	48V	48V
Weight (kg)	62	70
Static thrust (kgf)	156	195
Motor controller included	Yes	Yes

\*Motor power is depending on water conditions, usage and installation.

# // BOW- OR STERN THRUSTER

The best solution for continuous running times

The standard bow thruster is extremely compact which makes it possible to place it further in the nose of the boat. You can install them not only in the bow of the boat but also at the stern as a stern thruster. This makes maneuvering easier in tight spaces.

## Characteristics



Electric propulsion



Extreme power



Low in maintenance



## Specifications

	Thruster 0.5	Thruster 2.5	Thruster 3.0	Thruster 4.2	Thruster 5.0	Thruster 8.0	Thruster 11.0	Thruster 15.0	Thruster 22.0	Thruster 25.0	Thruster 30.0	Thruster 50.0	Thruster 75.0
Power (kW)*	0.5	2.5	3.0	4.2	5.0	8.0	11.0	15.0	22.0	25.0	30.0	50.0	75.0
Nominal voltage	48V	24V	48V	24V	48V	48V	48V	48V	48/96V	96V	110V	400 - 800V	400 - 800V
Weight (kg)	2.5	3.5	3.5	5	5	11	14	18	50	70	70	73	100
Static thrust (kgf)	5.5	19	25	44	55	105	140	175	265	320	350	660	730
Motor controller included	Yes	Yes	Yes	Yes	Yes	Yes	Yes	Yes	Yes	Yes	Yes	No	No

\*Motor power is depending on water conditions, usage and installation.



# // THRUSTER TUNNEL SET

A strong stainless steel provides a robust solution for our bow- or stern thrusters

The tunnel sets are easy to install due to the various mounting options. This tunnel set is also available for our stern thrusters

## Characteristics



Electric propulsion



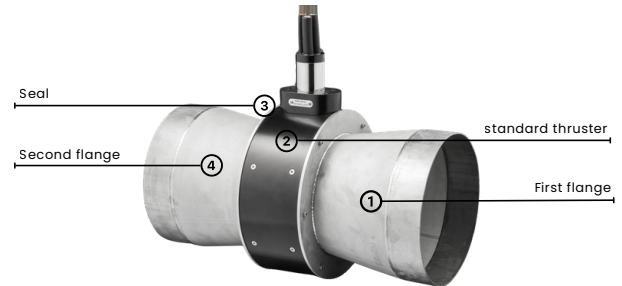
Extreme power



Low in maintenance



Tunnel installation



## Specifications

	Tunnel set 2.5	Tunnel set 3.0	Tunnel set 4.2	Tunnel set 5.0	Tunnel set 8.0	Tunnel set 11.0
Diameter tube	114.3	114.3	139.7	139.7	204	219
Weight (kg)	5.5	5.5	8	8	20	25
Material*	Stainless steel	Stainless steel	Stainless steel	Stainless steel	Stainless steel	Stainless steel

Tunnel set 15.0	Tunnel set 22.0	Tunnel set 25.0	Tunnel set 30.0	Tunnel set 50.0	Tunnel set 75.0
219	323.9	355.6	355.6	355.6	355.6
32	75	100	100	103	103
Stainless steel	Stainless steel	Stainless steel	Stainless steel	Stainless steel	Stainless steel

\*On request, other materials are also available such as: steel, aluminium and glass fiber.

# // THRUSTER BOX

The bow thruster box makes it easy to access the motor

This motor boast easy removal from its box, even when above the waterline, avoiding the need to take the boat out of water.

This box is also available

## Characteristics



Electric propulsion



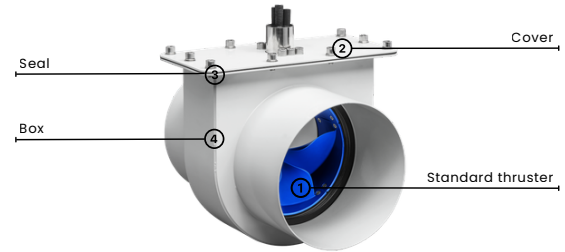
Extreme power



Low in maintenance



Closed box installation



## Specifications

	Thruster box 2.5	Thruster box 3.0	Thruster box 4.2	Thruster box 5.0	Thruster box 8.0	Thruster box 11.0
Tunnel diameter (mm)	114.3	114.3	154	154	204	254
Weight (kg)	18.5	18.5	20	20	26	34
Material*	Stainless steel Glass fiber Aluminium HDPE	Stainless steel Glass fiber Aluminium HDPE	Stainless steel Glass fiber Aluminium HDPE	Stainless steel Glass fiber Aluminium HDPE	Stainless steel Glass fiber Aluminium HDPE	Stainless steel Glass fiber Aluminium HDPE

Thruster box 15.0	Thruster box 22.0	Thruster box 25.0	Thruster box 30.0	Thruster box 50.0	Thruster box 75.0
254	323.9	355.6	355.6	355.6	355.6
41	80	105	105	108	132
Stainless steel Glass fiber Aluminium HDPE	Stainless steel Glass fiber Aluminium HDPE	Stainless steel Glass fiber Aluminium HDPE	Stainless steel Glass fiber Aluminium HDPE	Stainless steel Glass fiber Aluminium HDPE	Stainless steel Glass fiber Aluminium HDPE

\*Other materials can affect the weight and tunnel diameter.



# // INTRODUCING OUR: MODULAR SYSTEM

This modular system provides partners with maximum flexibility, allowing quick conversion of a fixed POD into multiple configurations, such as Steerable POD, Entry Level outboard, or Bow thruster, in 30 minutes.

### Adapt your drive up to 75kW

**BASIC: FIXED POD**

#### 1. ENTRY LEVEL STEERABLE POD

- Adapter tube
- Converter kit incl. parts



#### 2. STEERABLE POD

- Adapter tube
- Converter kit incl. parts



#### 4. STANDARD THRUSTER

- Outlet ring > Inlet ring
- Propeller change



#### 3. ENTRY LEVEL OUTBOARD

- Adapter tube
- Converter kit incl. parts
- Additional part: tiller



Scan and see how the modular system works.



# // ACCESSORIES: TOTAL SYSTEM

Throttle controls

Single- Top



Single- Side



Double- Standard



Thruster control



Steerable POD joystick



48V batteries

48V 60Ah



48V 100Ah



48V 200Ah



48V 3400Wh



48V 6800Wh



48V 13600Wh



Smart solutions

Smart steering system



Glendinning joystick



Dynamic Positioning System



Chargers

48V 2000W



48V 3300W

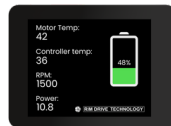


Displays

Display 5-9"



Entry Level Display



Cables

Main power set



Safety kit set





## BATTERIES

The high energy density, combined with no maintenance costs and affordable pricing makes these batteries the perfect candidate for those who wish to be powered electric. There are multiple technical advantages of our batteries that make a Rim Drive Technology battery a pleasure to use.



- High energy density.
- Minimal dimensions.
- Maintenance free
- IP Class: IP65

- Multiple layer software protection
- Aluminum casing, fire retardant
- Robust cylindrical cells
- Replaceable cell modules > Serviceable design
- IP Class: IP67

# // BATTERIES

The best solution for full day operation

## Characteristics



Integrated BMS



High energy density



No maintenance



Affordable pricing



## Specifications

48V 60Ah	48V 100Ah	48V 200Ah	48V 3400Wh	48V 6800Wh	48V 13600Wh
51.2V	51.2V	51.2V	51.2V	51.2V	51.2V
60Ah	100Ah	200Ah	66Ah	133Ah	266Ah
30	50	75	33	61	119
34x33x26cm	51x35x26cm	60x42x24cm	39.7x25.3x22.7cm	69.5x25.3x22.7cm	129.5x25.3x22.7cm



# BATTERIES

## Other specifications

48V 60Ah	48V 100Ah	48V 200Ah	48V 3400Wh	48V 6800Wh	48V 13600Wh
30A	50A	100A	60A	80A	130A
120A	125A	200A	100A	150A	150A
58.4V	58.4V	58.4V	56.8V	56.8V	56.8V
10V	10V	10V	43.2V	43.2V	43.2V

## Temperatures

Environment	Details	Minimum	Maximum
Operating temperature	Charge	0°C	45°C
	Discharge	-20°C	65°C
Storage temperature	1 month	-20°C	60°C
	3 months	-20°C	45°C
	12 months	-20°C	20°C

### Certification standards

EN IEC 61000-6 1:2019
EN 61000-6 3:2007 + A1:2011 + AC:2020
EN IEC 61000-3-2:2019
EN 6100-3-3:2013 + A1:2019
EN-IEC 62620:2015
EN-IEC 62619:2022

\*Optional: notified body certification

# // CHARGERS

Chargers to keep you connected and powered up

## Characteristics



Plug and play



Low weight



IP67 sealed



Compact design



## Specifications

	2000W	3300W
Nominal voltage	48V	48V
Max. charge voltage (V)	58.4	58.4
Max. charge current (A)	35	50
Weight (kg)	4.5	6
Dimensions (mm)	282x181x98	350x188x99
IP-rating	67	67



# // THROTTLE CONTROLS

Our unique throttle control for ultimate compatibility

All our throttle controls are lightweight, and easy to use. Through intensive testing, a reliable throttle has been created that can guarantee the safety of the user on the water.

## Characteristics



Easy to use



Compact design



Interchangeable handle design



## Specifications

	Single - Top	Single - Side	Double - Standard	Double with Display
Rated voltage	5V	5V	5V	5V
Output voltage	0.8V - 4.2V	0.8V - 4.2V	0.8V - 4.2V	0.8V - 4.2V
Operating temperature range	-25°C to +55°C	-25°C to +55°C	-25°C to +55°C	-25°C to +55°C
Storage temperature range	-40°C to +85°C	-40°C to +85°C	-40°C to +85°C	-40°C to +85°C
Mechanical Angle	±50	±90	±50	±50
Protection class	IP68	IP68	IP68	IP68
Weight (kg)	0.6	0.4	2	2.4*

Thruster control	Steerable POD joystick
With push button	Voltage range 0.5V - 4.5V
Quick-fit fastener	Quick-fit fastener
Switching voltage 5V	Switching voltage 5V

# // SMART SOLUTIONS

Vessel control systems

## Smart Steering System

Steering with twin motors without rudders and additional steering mechanism. Rotation on location. A magnetic compass with LED indicator. A speed button with LED indicator and a joystick with algorithm to control twin motor system.



- **High speed selector**

- With this feature, the Rim Drive motor delivers full power, enabling smooth, long-distance propulsion, while the steering motor responds with reduced sensitivity for easier control.

- **Cruise control selector**

- The motor will automatically corrects the effect of wind and current based on a compass signal.

## Dynamic Positioning System

By switching on the Dynamic positioning system your vessel will keep position via a GPS signal. With the joystick you can easily adjust the heading or position of your vessel. Customers are responsible for providing their own GPS device that is compatible with the NMEA2000 protocol required for integration with our Dynamic Positioning System.

Especially for windy days with high currents we've developed the Parking control mode for side shift movements. After activating the parking control mode you are able by just pushing the joystick in a direction to move your boat in the exact same direction.

The system can be delivered for different configurations:

- 2x steerable POD / Steerable Outboard
- 2x fixed POD + 1x bow thruster
- 1x Steerable POD / Steerable Outboard + 1x Bow thruster





# // DISPLAYS

Provides the right information at the right time

The display shows important information such as estimated battery life, battery charge status, power consumption, global waterway maps and many more. By using our CAN converters, our system is compatible with Raymarine, Simrad, and Garmin displays.

## Specifications

	Display 5"	Display 7"	Display 9"
Voltage	8-28V DC	8-28V DC	8-28V DC
Operating temperature	-20 to 60°C	-20 to 60°C	-20 to 60°C
Consumption	440mA 12V	650mA 12V	800mA 12V
IP rating	IPX6	IPX6	IPX6
Connection	WIFI	WIFI	WIFI
GPS	Yes	Yes	Yes
Multi-language	Yes	Yes	Yes
Alarms	Visual and audible	Visual and audible	Visual and audible
Auto-on	Yes	Yes	Yes



Intelligent warnings



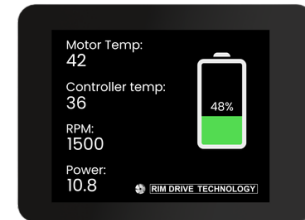
Compact touch



Global waterway maps



Now also available in a simplified version with only the most important information.





**RIM DRIVE TECHNOLOGY**



**Uncompromised  
Electric Motors**

[www.rimdrivetechnology.nl](http://www.rimdrivetechnology.nl)

+31 (0) 85 482 48 55

[Info@rimdrivetechnology.nl](mailto:Info@rimdrivetechnology.nl)